



January 2017 Freight Workshop

Wednesday, January 25, 2017 | 9:30 AM and 1:30 PM

Northeast Service Center (Tool Yard)

10303 Tool Yard, San Antonio, Texas 78233

Prepared by:



OVERVIEW



The Alamo Area Metropolitan Planning Organization (AAMPO) held two identical freight workshops on Wednesday, January 25, 2017, one at 9:30 a.m. and another at 1:30 p.m., at the Northeast Service Center (Tool Yard), 10303 Tool Yard, San Antonio, Texas 78233.

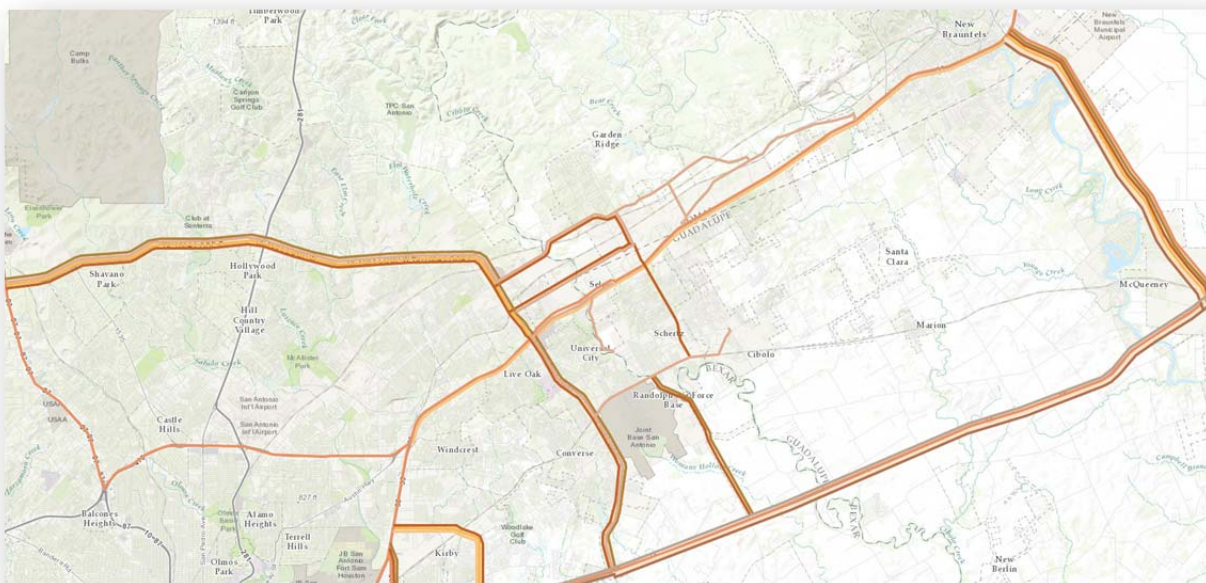
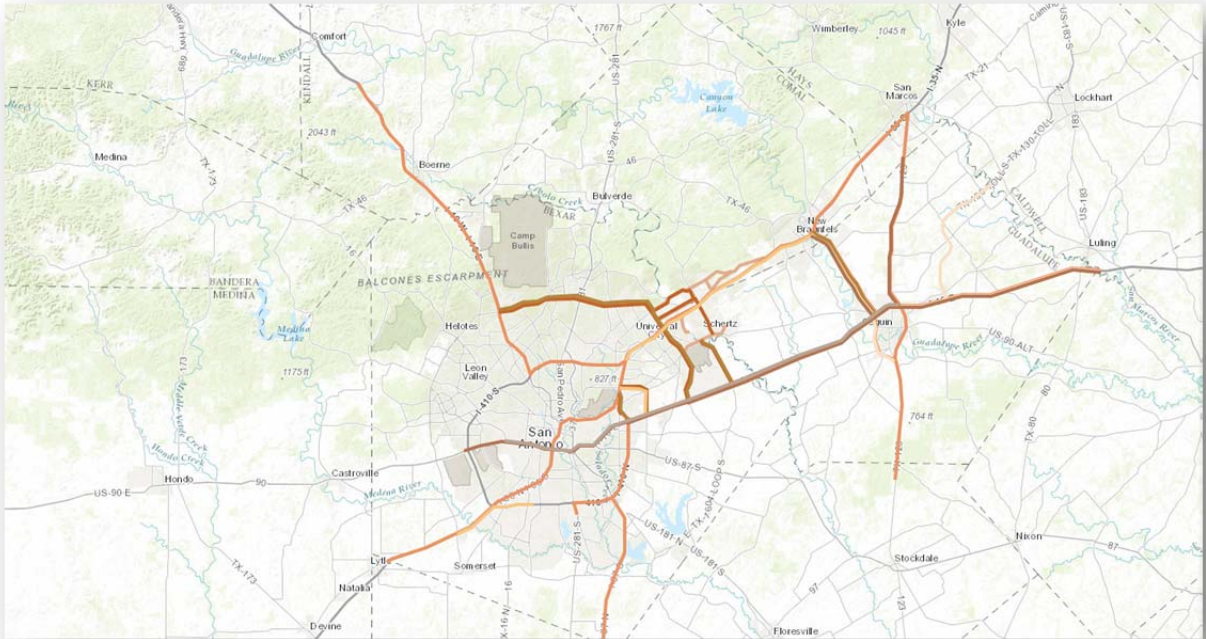
The meeting was held in a workshop format. It began with a presentation by the Alamo Area MPO that set the stage for the meeting and laid out the meeting objectives. Participants then heard two presentations on recent developments in freight. One was on the freight shuttle system and was delivered by Gary Kuhn with the Freight Shuttle System and the other was on Enabling Technologies for Truck Automation and was delivered by Dr. Kris Kozak with Southwest Research Institute.

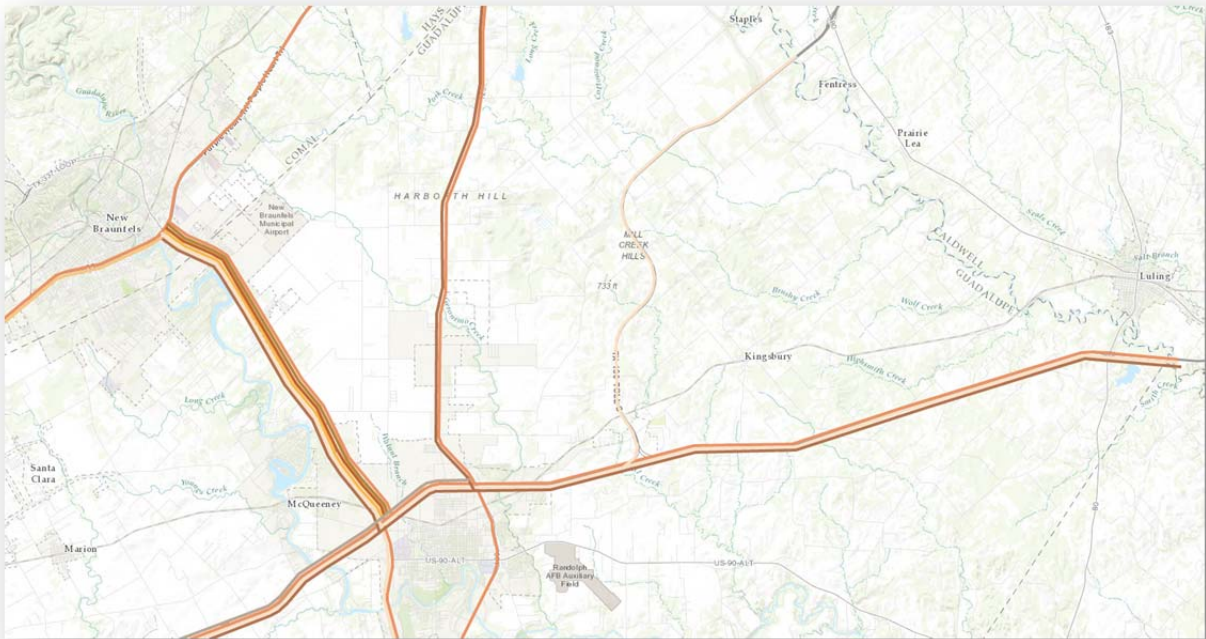
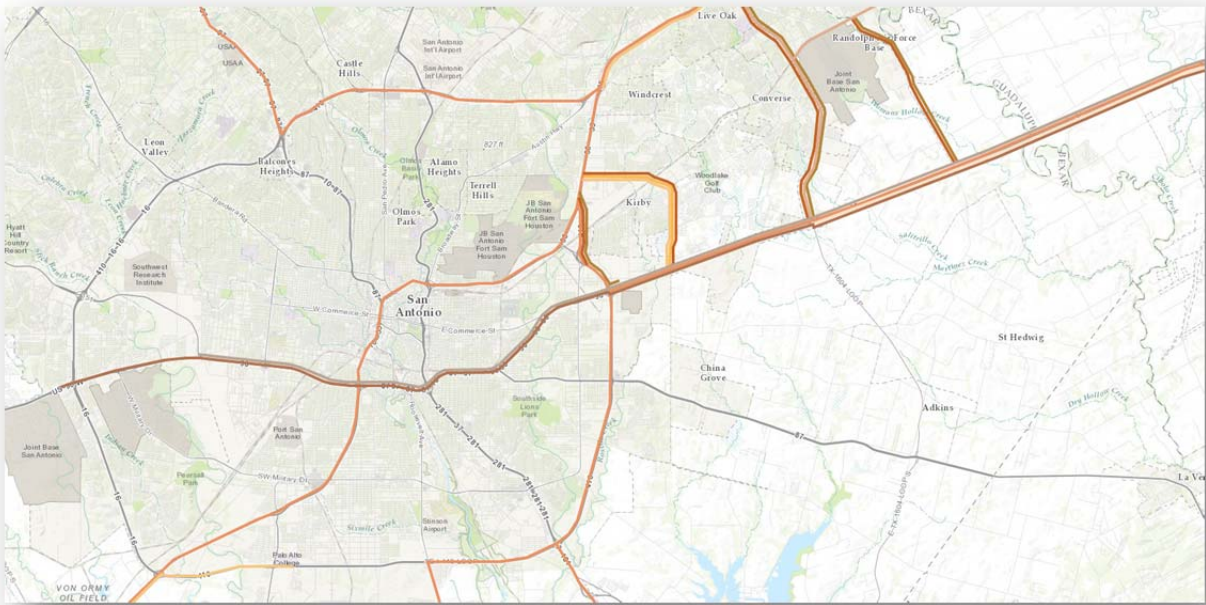
Participants then worked in small groups to 1) identify the routes most frequently used by their organizations, 2) identify areas of concern regarding freight transportation in the region, 3) provide feedback on the Critical Urban Freight Corridors, and 4) come to consensus on the top three priorities for their group. Approximately 30 people participated in the workshops.

This report documents input and feedback collected from participants. This information will be presented to the Freight Rail and Transit Committee, the Technical Advisory Committee, and the Transportation Policy Board in February/March 2017. The board is expected to take action on the Critical Urban Freight Network at their April 2017 board meeting.

EXERCISE 1: IDENTIFY ROUTES YOU OR YOUR ORGANIZATION MOST FREQUENTLY USE

Following are summary maps that represent the results of this exercise. Generally, the thicker the appearance of the line, the more organizations indicated they used that particular corridor. Please note this information is available and best viewed at: <http://maps.alamoareampo.org/freight/>





EXERCISE 2: IDENTIFY AREAS OF CONCERN YOU OR YOUR ORGANIZATION HAVE ABOUT TRANSPORTING FREIGHT IN THE REGION

Group	Facility	Comment
1-AM	FM 1103	FM 1103 at FM 78 railroad tracks - trains back up traffic
1-AM	FM 1518	Lots of truck traffic and new development
1-AM	FM 2252	Lots of traffic because of asphalt plants
1-AM	Foster Road	Foster Road at IH 10 - congestion
1-AM	IH 10 East	Needs improvement going from IH 10 to Loop 410 north
1-AM	IH 10 East	IH 10 East - congestion increasing
1-AM	Lookout Road	At Cibolo Creek there's a drainage dip and 4-way stop that creates a log jam
1-AM	Loop 1604	Congestion
1-AM	Rittiman Road	Rittiman to Gibbs Sprawl - railroad tracks are impediment
1-AM	Schwab Road	Drainage issue west of IH 35
1-AM	SH 46	Need flyovers at IH 35 past red lights to alleviate traffic jams and provide easier turns
1-PM	General	Traffic incident management - benefit for little money - currently staging at 13 locations peak times - affecting whole economy (backing up people going to work and freight delivery)
1-PM	General	GPS isn't meant for trucks and routes them inappropriately sometimes
1-PM	General	Lack of truck parking in San Antonio area
1-PM	General	Mile marker 619 - truck parking station is full (newly built)
1-PM	General	Lane configuration - are trailers being considered for turns?
1-PM	General	Is there communication between Austin and San Antonio districts? Re: Transguide message boards? Ex. Of closure of IH 35 in San Marcos that didn't make SA messages
1-PM	IH 10 East	Taking the turn off of IH 10 to SH 46 will lay a trailer over if taking the turn too fast
1-PM	Landa Street	low crossing bridge (Landa Street Bridge) if trucks aren't using the Loop 337 bypass
1-PM	Loop 1604	Northside growth - congestion, safety at major interchanges (fender benders)
1-PM	SH 46	Intersection of SH 46 and IH 10 into Seguin
1-PM	SH 46	SH 46 between Boerne and New Braunfels sees more traffic than used to (being used as a bypass of San Antonio perhaps because mapping

Group	Facility	Comment
		apps are directing it)
1-PM	US 281	US 281 N especially north of 410 at superstreets, generally
2-AM	General	Alternative fuel availability - Nat Gas - airport, IH 35 & Rittiman - Propane - Rigsby & WW White
2-AM	General	There is no natural gas past Kerrville - cannot get to El Paso
2-AM	General	More truck stop electrification
2-AM	IH 10 East	IH 10 at Santa Clara - 160 acre industrial park - need overpass, on ramp access
3-AM	FM 3009	FM 3009 from FM 78 to IH 35 - congested - school zones, HEB, School, Clemens HS - not designed for freight route, has signals
3-AM	FM 452	FM 452/FM 2252 - truck diversions on IH 35
3-AM	FM 78	FM 78 at FM 1103 crossing tracks - trucks coming from IH 35 on 78 - GPS sends trucks to little county road - trucks bottom out "County Lane"
3-AM	FM 78	FM 78 from Loop 1604 to FM 3009 - congested at shift changes at Randolph - only have one gate open
3-AM	General	Note new Amazon facility - outside of study area but affects study area
3-AM	IH 10 East	IH 10 East traffic to Houston - particularly on Sunday evenings IH 10 more like IH 35 - population growth
3-AM	IH 35 North	IH 35/Loop 410 merge still messes up traffic - warehouses
3-AM	Presa	Presa at Southcross - trucks get stuck
3-AM	Quintana Road	Quintana Road by Port San Antonio truck traffic through residential area
3-AM	S. St. Mary's Street	Underpass near Roosevelt Park and Lone Star Brewery
3-AM	SH 123	SH 123 - single lane each direction, lights, development, San Marcus High School - traffic
3-AM	SH 130	Actually do use SH 130 - is not cost effective - if checking in Austin - if going to N. Austin then is ok
3-AM	SH 46	SH 46 from IH 10 E to IH 35 - bad all day worse on holidays and weekends - quarries
3-AM	SH 46	SH 46 at IH 35 - traffic at signals back up for miles - back to Clear Springs
3-AM	SH 46	SH 46 - aggregate trucks tearing up road, subsided now at \$60 bucks/barrel will be back in business

EXERCISE 3: HOW WELL DO THE RECOMMENDED CRITICAL URBAN FREIGHT CORRIDORS REFLECT THE ROUTES YOU USE AND ISSUES/CONCERNS IDENTIFIED ON THE MAP

No comments were recorded during this portion of the meeting. Participants expressed the identified corridors aligned well with the routes they use on a regular basis.

EXERCISE 4: IDENTIFY THE TOP THREE PRIORITIES FOR YOUR GROUP

Following are the priorities identified by each of the groups.

Group	Priority 1	Priority 2	Priority 3
1-AM	Hwy 46 at IH 35 & to Seguin	Loop 1604	Rittiman Road & Foster
1-PM	Improve traffic incident management- good bang for buck; formalize structure for a region (SA-Austin) system	Loop 1604 on northside, addressing congestion/safety for the benefit of all vehicles, including freight acknowledge plans are already in place	
2-AM	Lack of alternative fuel stations dissuades fleets from going through San Antonio - Natural gas between San Antonio and El Paso	Improvements to Hwy 46 from IH 10 to New Braunfels	
3-AM	SH 46 between IH 10 and IH 35 especially interchanges at each	IH 35/Rittiman Road area is still a problem	GPS misrouting

ATTACHMENT A: FACILITATOR'S AGENDA



Freight Stakeholder Workshop Wednesday, January 25, 2017

Session 1: 9:30 a.m. to 11:30 a.m.

Session 2: 1:30 p.m. to 3:30 p.m.

Northeast Service Center (Tool Yard)

Facilitator's Agenda

1. **Exhibits and Feedback Stations** (*during sign-in; ~15 minutes*)
 - Display of 2013 Freight Workshop feedback and overlapping TIP/MTP project limits (For information only)
 - Locations of major freight generators and warehouse/industrial lands (Encourage attendees to fill in missing information)
2. **Welcome and introductions** (*5 minutes*)
3. **Setting the Freight Stage** (*10 minutes*)
 - *Alamo Area Metropolitan Planning Organization*
4. **Latest Developments in Freight** (*20 minutes*)
 - Freight Shuttle System – *Gary Kuhn, Freight Shuttle System*
 - Enabling Technologies for Truck Automation – *Dr. Kris Kozak, Southwest Research Institute*
5. **Introducing the Group Exercise** (*10 minutes*)
 - *Alamo Area Metropolitan Planning Organization*
6. **Group Exercise** (*50 minutes total*)
 - A facilitated discussion to identify your concerns about freight transportation and feedback on the recommended Critical Urban Freight Corridors

Materials needed:

- Notepads
- Map of region
- Maps showing industrial land use, draft CUFCs, and truck traffic percentages and volumes
- Highlighters of different colors (6)
- Red sharpies
- Black pens
- Dot stickers (*optional*)

825 South Saint Mary's Street • San Antonio, Texas 78205

(210) 227-8651 (210) 227-9321 TTD 1 (800) 735-2989

www.alamoareampg.org

- a. **Write your name and the workshop session on the map. Ask everyone to introduce themselves (name, organization and role) (2 minutes)**
- b. **Use a highlighter to identify routes you or your organization most frequently use (10 minutes)**
 - Distribute a **highlighter** to each organization represented at the table and ask participants to mark the routes on the map they frequently use
 - Routes that are marked in more than one color show that multiple organizations rely on those corridors, which gives us a sense of importance
 - Pick up **highlighters** when the group is ready to move on.
- c. **In your group, identify areas of concern you or your organization have about transporting freight in the region. These can be general issues (i.e., incident management) or specific problem areas in the transportation system (i.e., bottlenecks). (20 minutes)**
 - Use the map to identify locational issues or concerns. With a **black pen** (and optional sticker dots), number each issue as it is brought up
 - Use the numbered list printed on the map to provide descriptions of the issues as participants bring them up. Try to include useful details about how often/why this is an issue (daily, during peak hours, construction zones, etc.)
- d. **Look at the information on the map. How well do the recommended Critical Urban Freight Corridors reflect the routes you use and issues/concerns identified on the map? What changes would you make? Why? (15 minutes)**
 - With the group, review each draft recommended CUFC (see map legend and use the provided reference maps, if needed.). Ask if the group agrees that it provides a local connection for freight
 - Use the **red sharpie** to write any comments and corresponding “why”. Note any new corridors that participants bring up and why
- e. **In your group, think back through what has been discussed and identify three top priorities for your group. These can be specific projects, planning needs, or policies. (5 minutes)**
 - Write the group’s priorities in the space designated on the map
- f. **Report out: Allie will walk around the room to each of the groups. She will share their Top 3 priorities with the room as a whole**

7. Next Steps:

AAMPO staff will present feedback in February 2017 to the Technical Advisory Committee (TAC) Freight Work Group.

- Recommended CUFCs will be presented to the TAC and Transportation Policy Board at their March 2017 meetings. The Board will be asked to take action approving the recommendation at its April 2017 meeting.
- Identified CUFCs will be included in TxDOT's statewide Freight Plan update, to be complete by December 2017.

Feedback from the workshops will be summarized on our website at www.alamoareampo.org/freight. Thank you for participating!

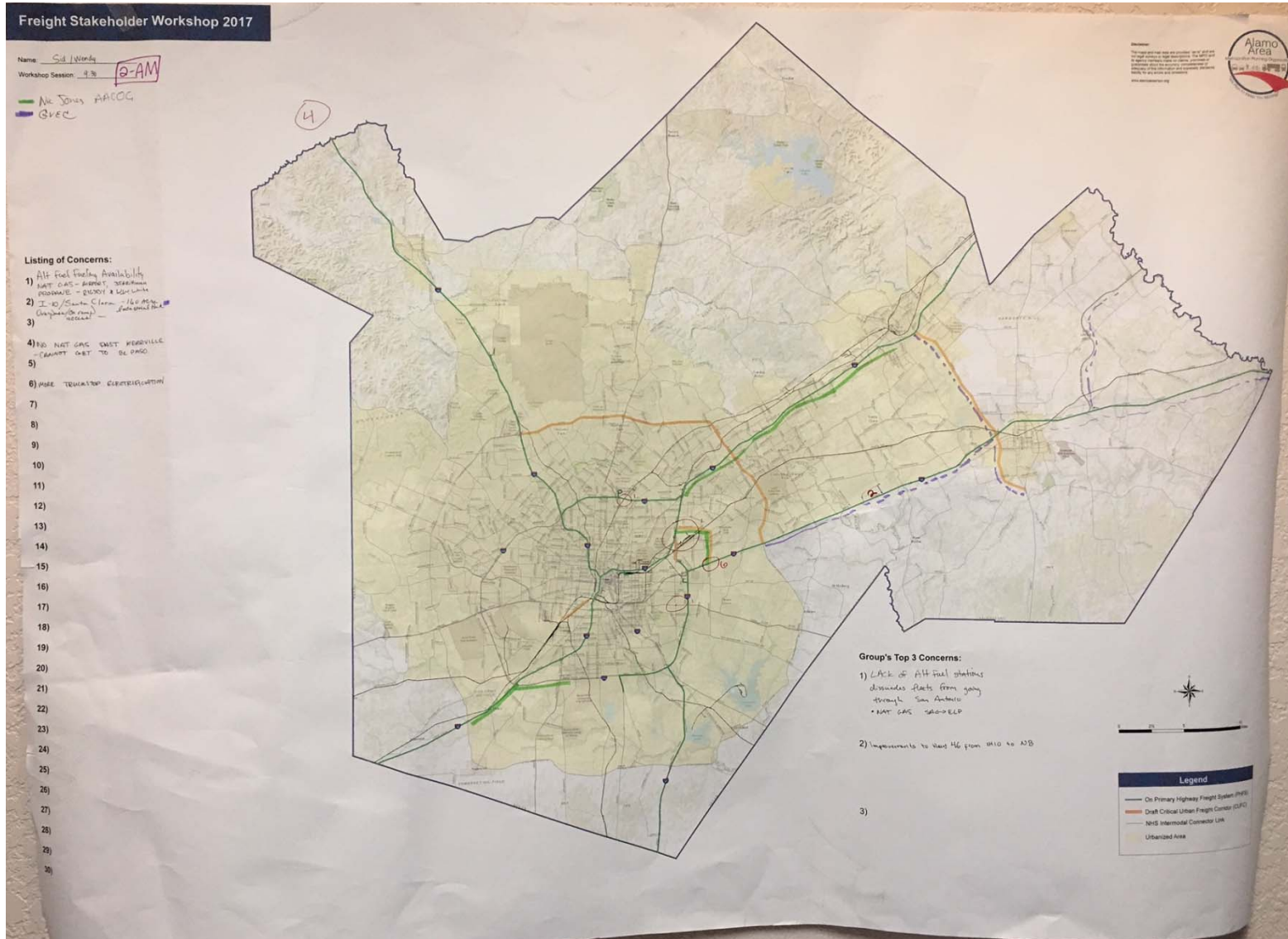
825 South Saint Mary's Street • San Antonio, Texas 78205

 (210) 227-8651  (210) 227-9321  TTD 1 (800) 735-2989

 www.alamoareampo.org

ATTACHMENT B: GROUP MAPS

GROUP 2 - AM



Group 1- PM

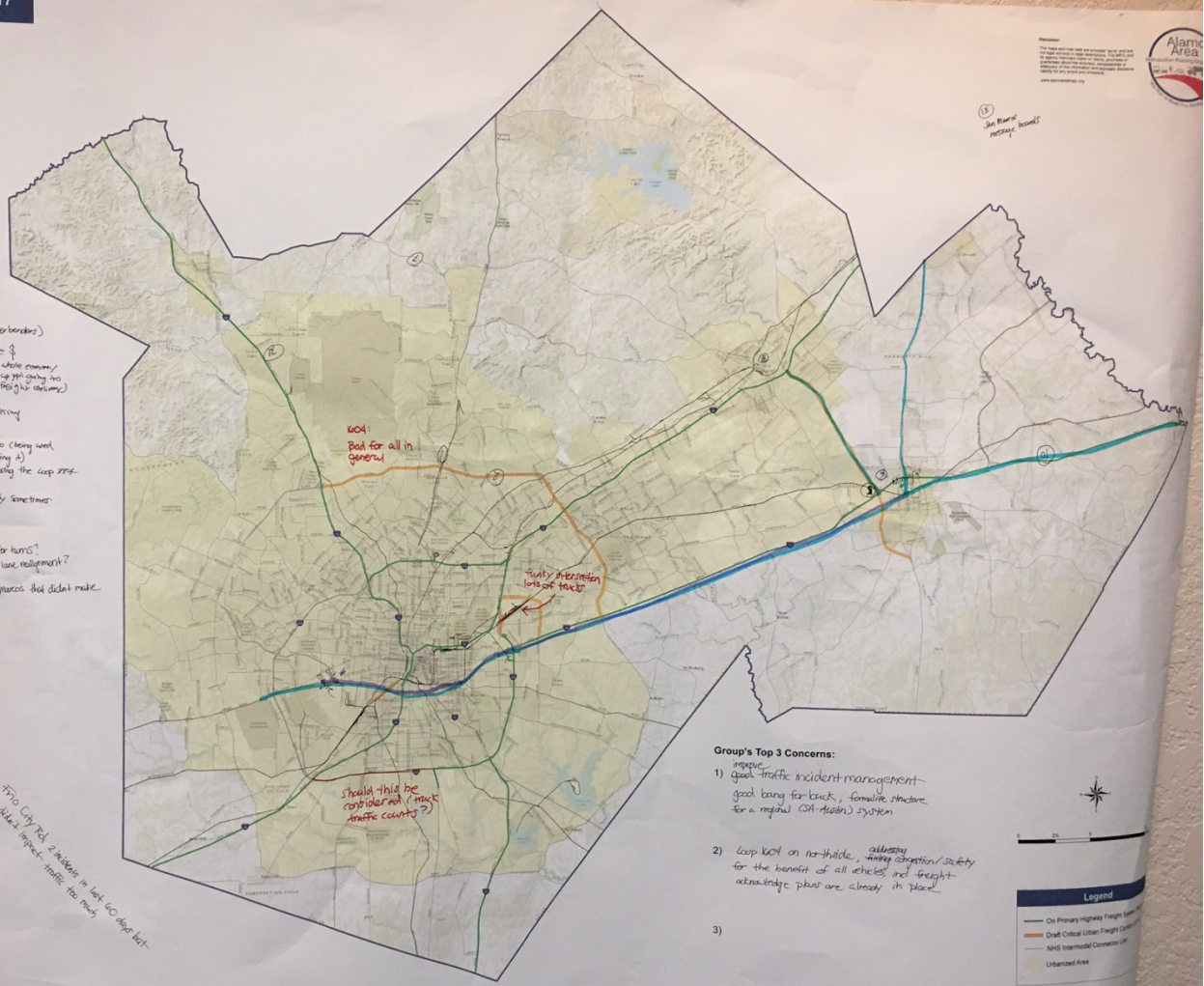
Freight Stakeholder Workshop 2017

Name: Travis & Allie
 Workshop Session: PM

Listing of Concerns:

- 1) 281 N esp. w/ Super-Direct; generally safety a major concern
- 2) 1604 Northside growth - congestion, interchanges (border/border)
- 3) traffic incident management - benefit for little \$ currently relying on private/public trucks
- 4) proximity ppl when working a street causing safety issues (no work a safety concern)
- 5) intersection of 46 & 141 is into highway
- 6) off of 46 onto 46 will lay a trailer over it taking turn see fault
- 7) 46 low volume & 141 sees more truck traffic than used to (heavy used as a bypass of San Ant perhaps w/ mapping app are starting it)
- 8) low crossing bridge (Caden's Boat Bridge) if trucks avoid using the coop street system
- 9) 695 isn't meant for trucks and cover them unsafely sometimes
- 10) lack of truck parking in Williams
- 11) even w/ 19 truck parking station is still (nearly built) under
- 12) lower reorganization - get trucks being considered for turns? temporary lane reassignment?
- 13) is there communication how business sh. be done? or "somebody message boards" or at least a 35 in San Marcos that didn't make the message
- 14)
- 15)
- 16)
- 17)
- 18)
- 19)
- 20)
- 21)
- 22)
- 23)
- 24)
- 25)
- 26)
- 27)
- 28)
- 29)
- 30)

From City of 2 bridges in last 60 days but what impact traffic too much



Loop 1604: Bad for all in general

Quality intersection lots of trucks

Should this be reorganized (more traffic counts?)

San Marcos message boards

Group's Top 3 Concerns:

- 1) ^{improve} good traffic incident management - good being for truck, favorable structure for a regional (SAH/Asotin) system
- 2) Loop 1604 on northside, ^{address} safety congestion/safety for the benefit of all vehicles and freight - advance plans are already in place
- 3)

Legend

- On Primary Highway Freight Corridor
- Draft Critical Urban Freight Corridor
- NHS Intermodal Connector Corridor
- Urbanized Area

