



Status of Freight Planning in the Alamo Area MPO



The **Fixing America's Surface Transportation (FAST) Act** is a five-year, \$305 billion bill that **reauthorizes** surface transportation programs

HITTING THE ROAD

FHWA Mile Markers in Implementation of the FAST Act – Year 1



The TxDOT Federal Affairs Department presented information about FAST Act funding and key provisions to the Transportation Policy Board in **January 2016**



The FAST Act included **key provisions related to freight:**

- Establish a **National Multimodal Freight Policy** and require a **National Freight Strategic Plan** to implement that policy
- Create a **new discretionary freight-focused grant program** to invest \$4.5 billion
- Set aside \$6.3 billion in **formula funds** for a newly designated **National Highway Freight Program**
- **Expand on performance measurement** targets established in MAP-21

Texas' Portion of National Highway Freight Program Formula Funding

Fiscal Year	Apportionment
2016	\$100,641,720
2017	\$96,265,993
2018	\$105,017,447
2019	\$118,144,628
2020	\$131,271,809
TOTAL	\$551,341,597

Source: TxDOT, January 2016

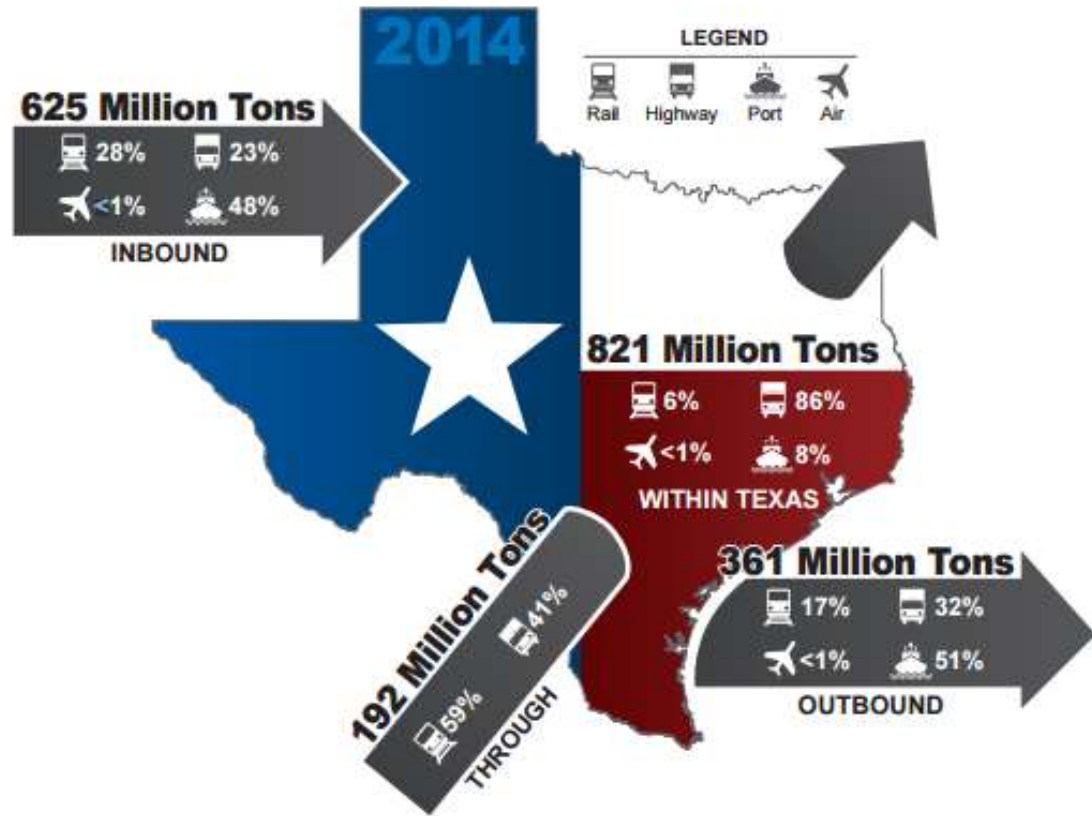


Texas is home to **26 million residents**, each of whom **depend on the daily delivery of goods** transported via a multimodal freight network

67 tons
per Texan

7 million
Texas workers

Almost
50%
growth from
2014 to 2040





The Texas Transportation Commission adopted the **Texas Freight Mobility Plan** in January 2016

- The **first plan** developed by TxDOT that **focuses on Texas' freight transportation needs**
- Submitted **10 projects** from the Texas Freight Mobility Plan totaling \$98.6 million under the National Highway Freight (**formula funded**) Program
 - One from AAMPO study area: IH-35 bridge at New Braunfels Ave
- Submitted **three projects** for FASTLANE (**discretionary grant**) Program funding
 - None awarded





Since the Freight Plan's approval in January 2016, FHWA has published **new FAST Act guidance and requirements**

- TxDOT is updating the Texas Freight Mobility Plan to comply by:
 - Designating **critical corridors**
 - Developing **performance measures**
 - Developing a **Fiscally Constrained Investment Plan** (project listing)
- FHWA must receive TxDOT's updated Freight Plan by **December 1, 2017**





What are **Critical Urban Freight Corridors (CUFCs)**?

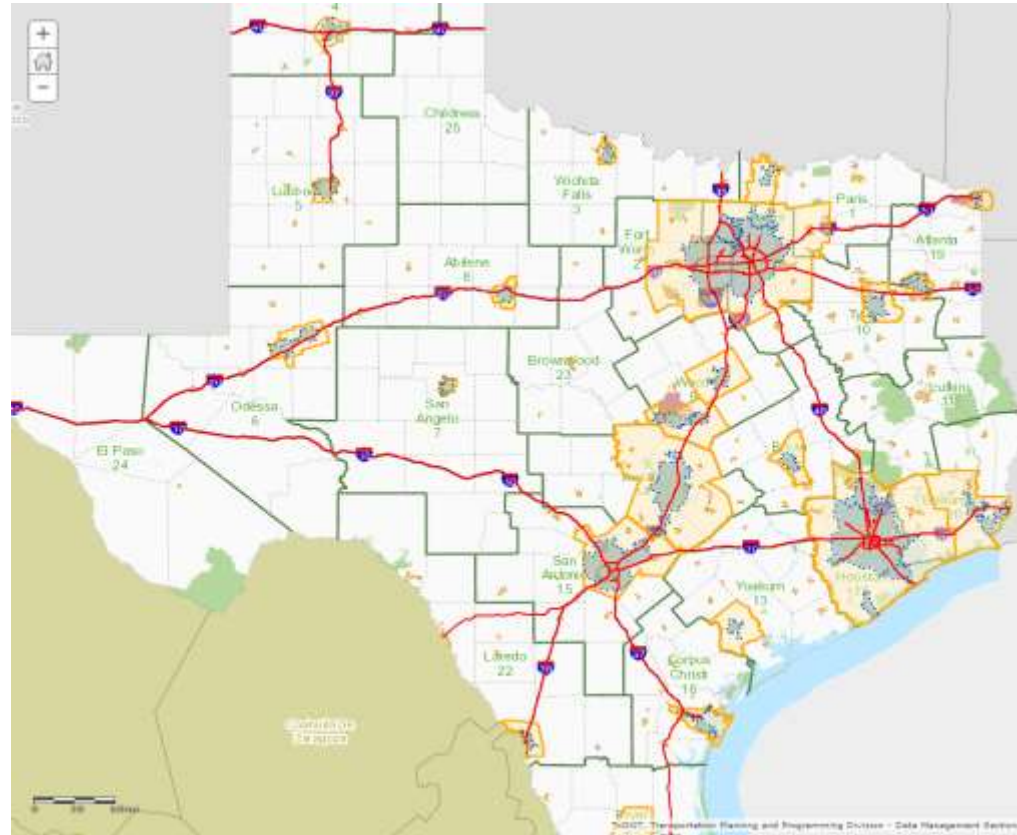
- The **FAST Act** authorizes large **MPOs**, in consultation with the state, to **designate locally significant public roads as Critical Urban Freight Corridors (CUFCs)**
- The state, in consultation with smaller MPOs, designates CUFCs for MPOs under 500,000 population
- CUFCs are part of the network **eligible for National Highway Freight Program** formula funds





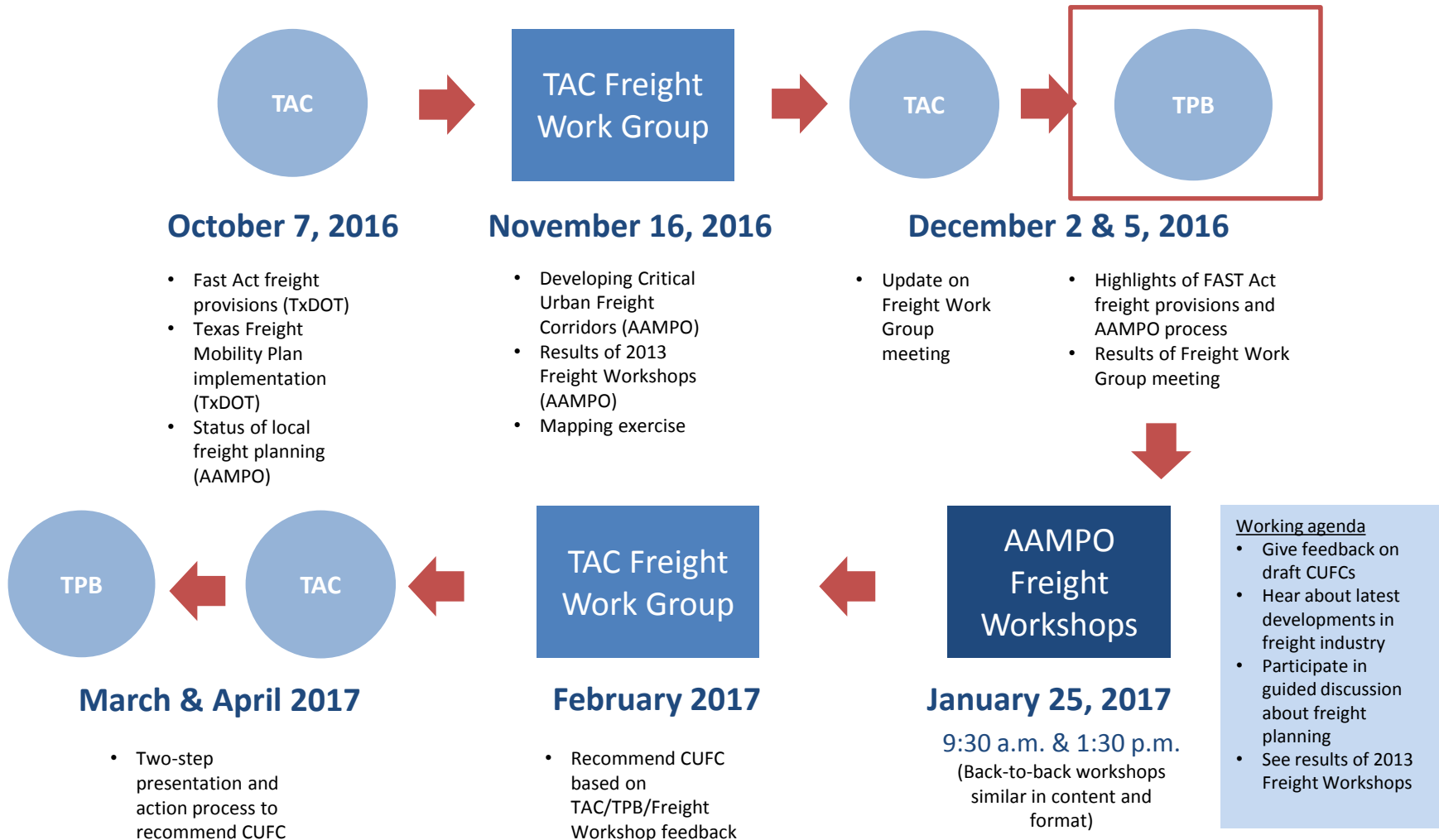
How many miles of CUFCs can be submitted for funding eligibility?

- Texas may designate about **373 miles of CUFCs**
- With 9.28% of the urbanized area in Texas, **AAMPO's** challenge is to identify **about 35 miles of CUFCs**
- CUFCs must meet certain requirements such as connecting an intermodal facility to the Interstate System or serving a major freight generator





AAMPO began a public involvement process for Critical Urban Freight Corridors (CUFC) designation in October






TAC members participated in a mapping exercise on November 16th to identify potential CUFCs

TAC used markers to identify:

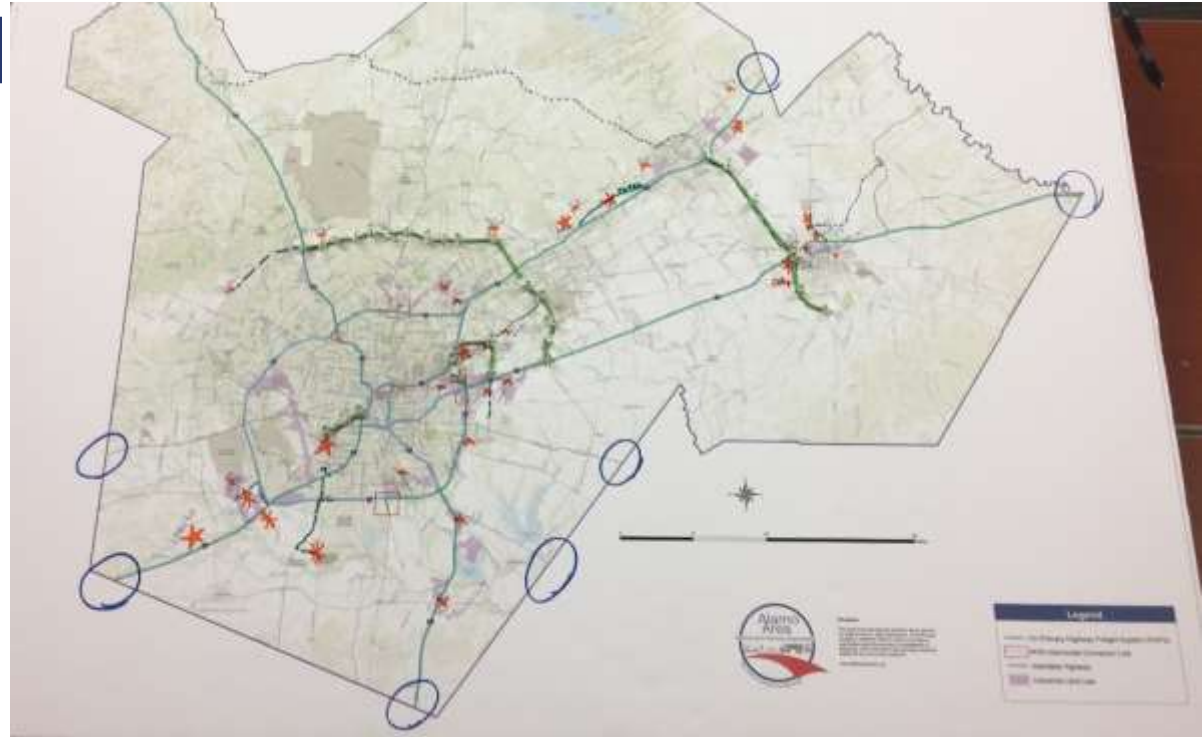
 **Where freight enters/exits the region**

 **Points of origin of freight (i.e. warehouses and intermodal centers)**

 **Connecting corridors**

Then, they worked with measured **strings to identify potential critical urban freight corridors**

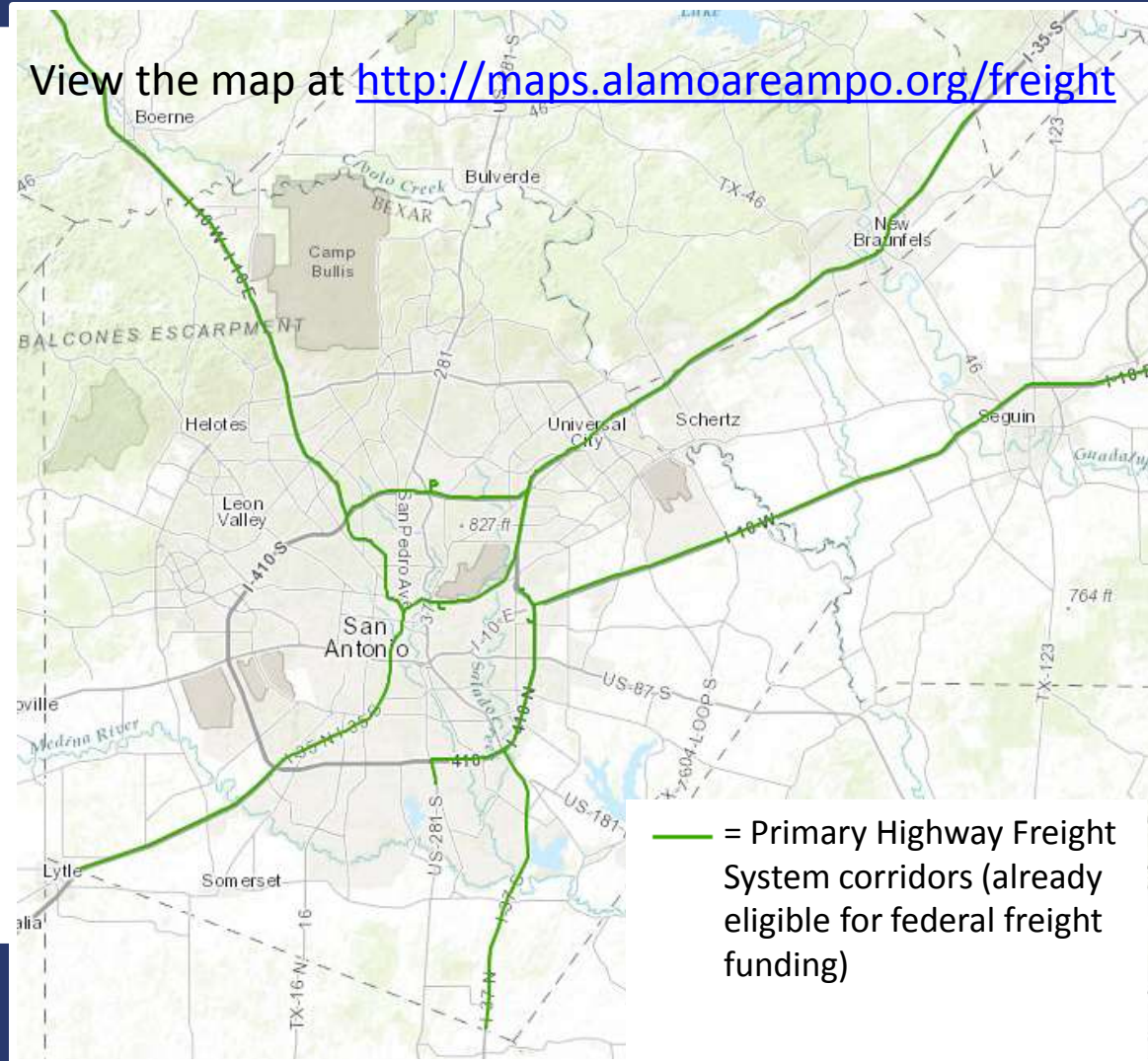
- Used 58 “miles” of string





Many corridors are identified on the national Primary Highway Freight System and are **already eligible for federal freight funding**

View the map at <http://maps.alamoareampo.org/freight>

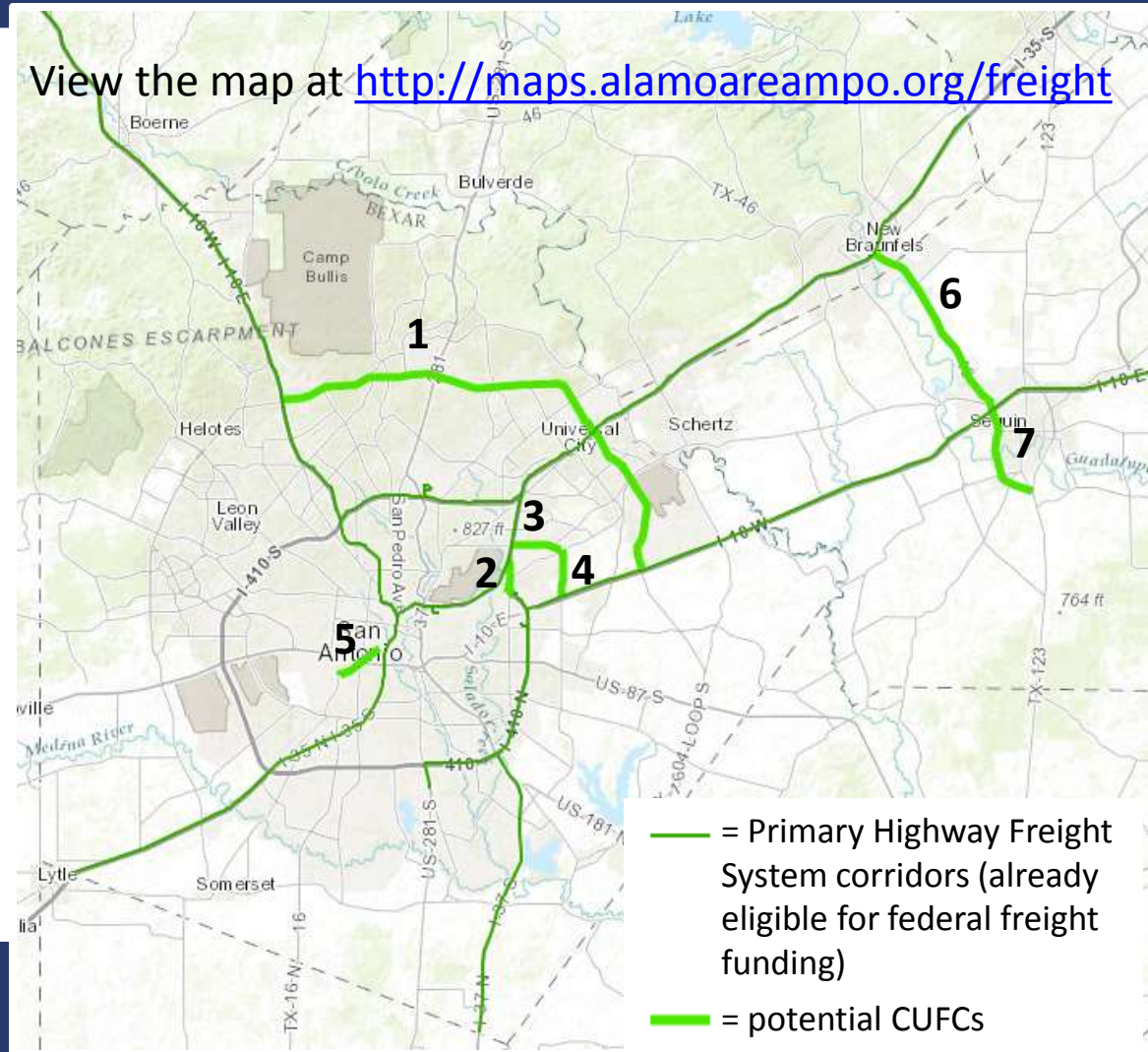




TAC members used 58 “miles” of string to draft the following locally significant public roads as potential CUFCs

1. **Loop 1604** from IH 10 W to IH 10 E (29.63 mi)
2. **Loop 410** from IH 35 N to NE Loop 410 (2.12 mi)
3. **Rittiman Rd** from Loop 410 to FM 78 (2.97 mi)
4. **Foster Rd** from FM 78 to IH 10 E
5. **Frio City Rd** from General Hudnell Dr to Brazos St (2.76 mi)
6. **SH 46** from IH 35 to IH 10 E (11.79 mi)
7. **SH 46** from IH 10 E to SH 123 (6.27 mi)

View the map at <http://maps.alamoareampo.org/freight>





AAMPO staff are maintaining an interactive map of data layers relevant to freight at maps.alamoareampo.org/freight. Updates are made as new information becomes available

Physical maps used by TAC in November showed:

- Primary Highway Freight System (PHFS)
- Interstate System
- NHS Intermodal connectors
- Industrial land use



Additional layers on maps.alamoareampo.org/freight:

- Freight Workshop feedback
- TxDOT UTP projects
- AAMPO TIP & MTP plans
- TxDOT Texas Highway Freight Network
- TxDOT 2015 and 2035 AADT
- TxDOT Truck Traffic Percentage of 2015 AADT
- *TxDOT Truck Volumes of 2015 AADT*
- National Multimodal Freight Network
- Hazardous Material Routes



AAMPO will host a pair of Freight Workshops for public and private freight interests on January 25, 2017

Workshops will be **similar in content** and format, and **the goals are to:**

- Give an **AAMPO freight overview**
- Hear about the **latest developments in freight** from (invited) representatives from the Freight Shuttle System, Southwest Research Institute and Amazon
- Participate in a **guided discussion about the growing role of freight** in order to:
 - **Identify areas of concern** and recommend CUFC corridors

DRAFT

Alamo Area Metropolitan Planning Organization
The Plan to Keep You Moving!

Freight Workshop

Ideal For

- Class A & B CDL drivers
- Driver managers
- Operations managers
- Logistics & facility managers

Moving freight? Hear about the latest developments in your field and have a say about the roads, rail and connections you use every day. Freight Workshops in 2013 generated over 130 comments about transportation issues impacting freight. Join us January 25, 2017 to:

- Hear how we used those comments
- Help us update our records with your knowledge of freight issues
- Recommend corridors that should qualify for federal freight funding
- Meet representatives from the Freight Shuttle System, Southwest Research Institute and Amazon who will talk about the future of freight
- Participate in a guided discussion about the growing role freight is playing in our transportation planning

Back-to-back workshops at 9:30 AM or 1:30 PM cover the same topics. Come to the workshop that fits your schedule!

Wednesday, January 25, 2017
9:30 AM & 1:30 PM
Northeast Service Center (Tool Yard)
10303 Tool Yard
San Antonio, TX 78233

freight@alamoareampo.org | (210) 227-8651 | www.alamoareampo.org/freight



These Freight Workshops **follow up on workshops** held in November 2013

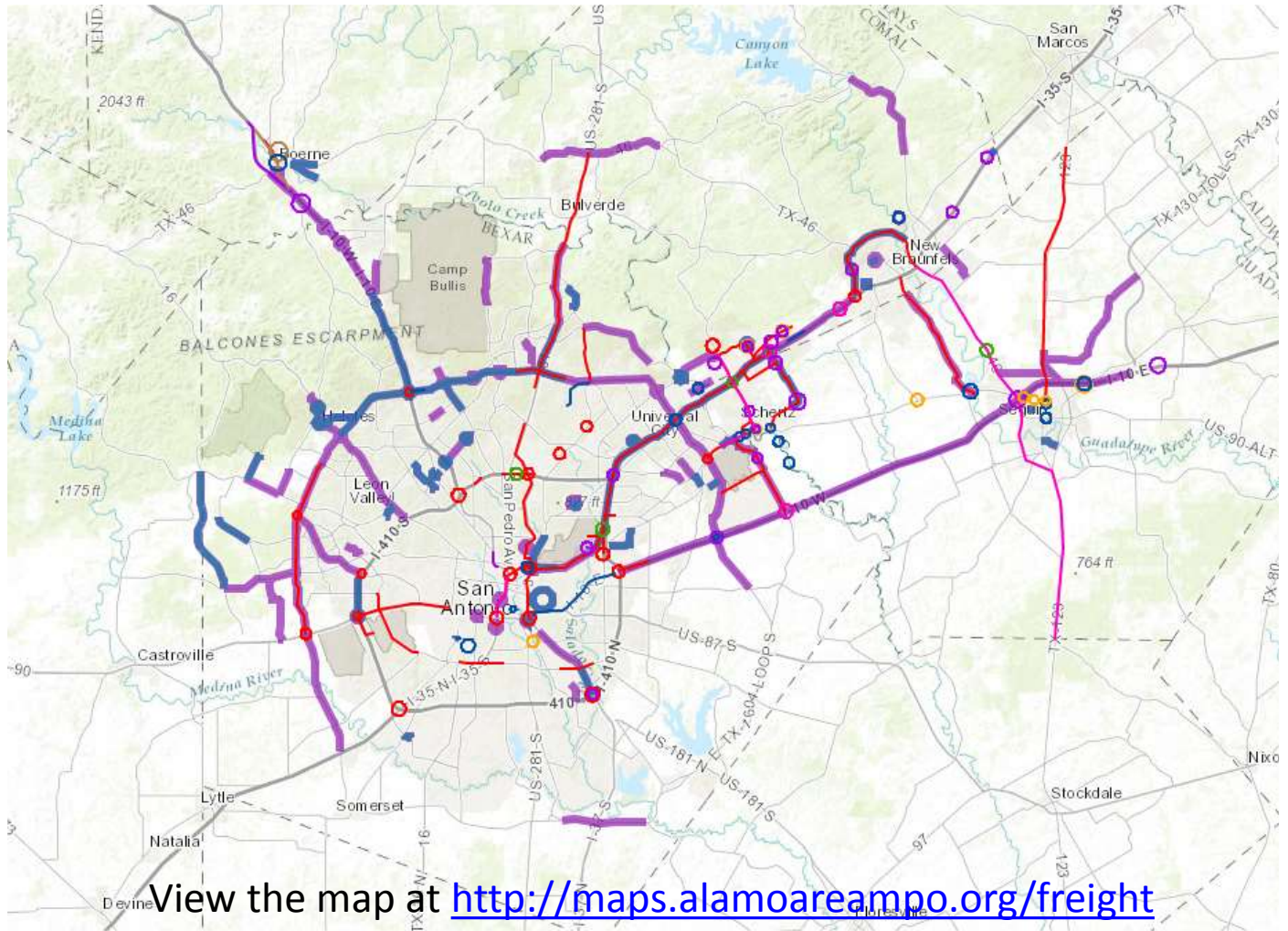
60+ attendees gave input on a variety of freight issues:

- Traffic congestion
- Safety concerns
- Rail issues
- Delivery issues
- Physical barriers
- Conflict points



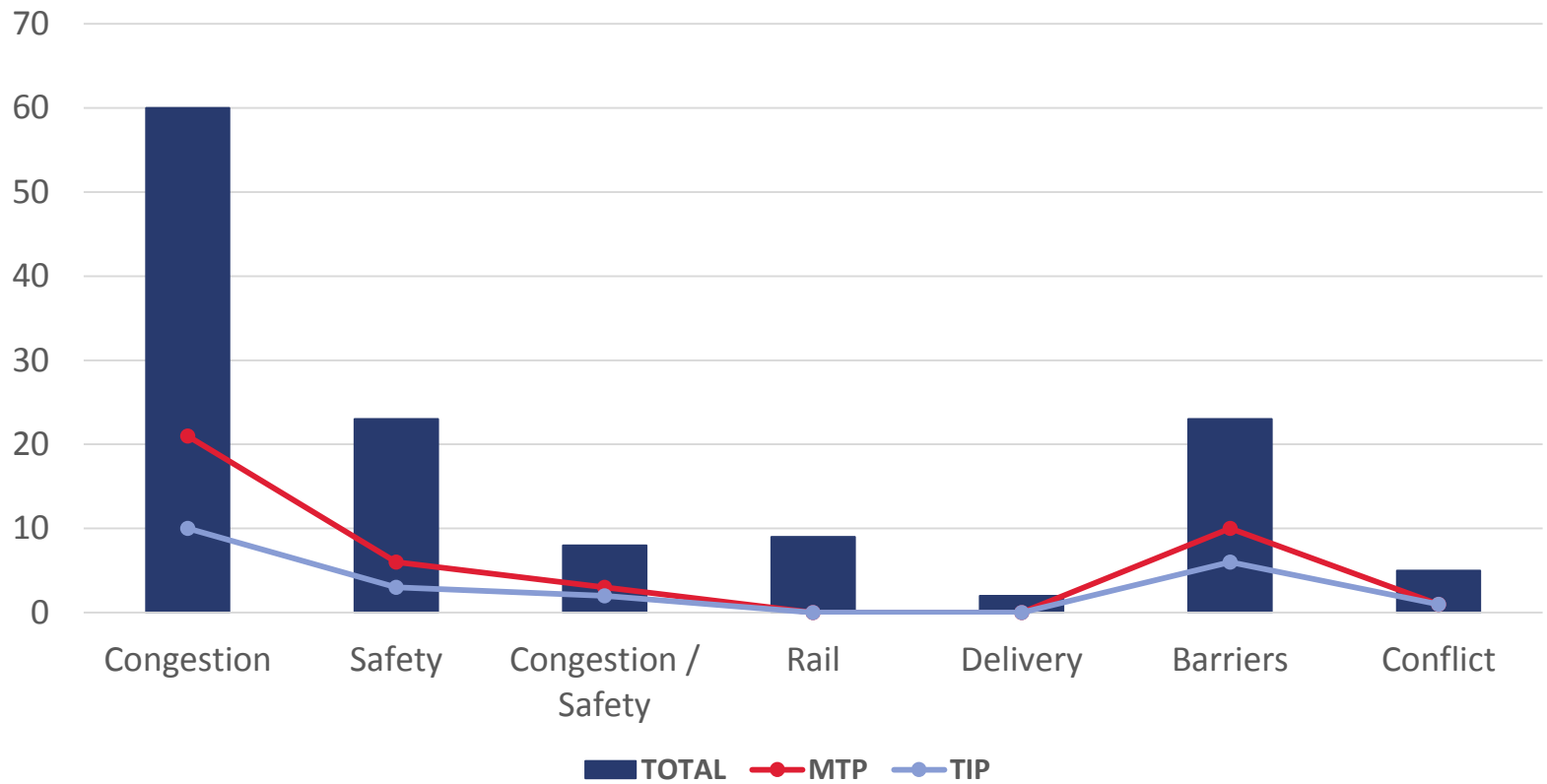


Stakeholders identified 130 concerns. **Forty-four overlap with project limits in Mobility 2040**



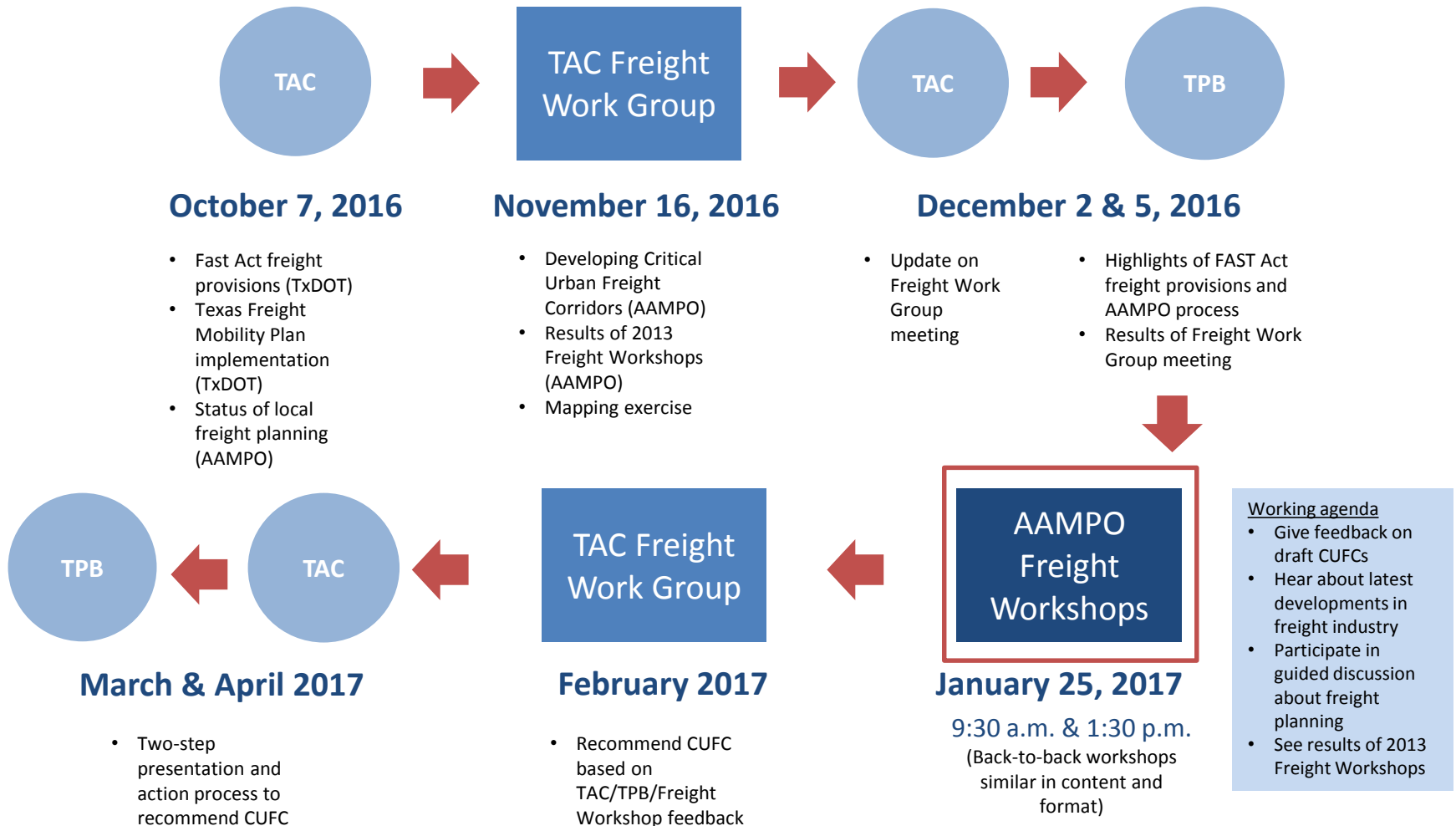


Stakeholders identified 130 concerns. **Forty-four overlap with project limits in Mobility 2040**





Following the Freight Workshops in January 2017, the Board can expect a two-step presentation and action process to recommend CUFCs in March/April 2017





Thank you!

Allison "Allie" Blazosky, AICP
AAMPO Regional
Transportation Planner
blazosky@alamoareampo.org
210-230-6911