



# Status of Freight Planning in the Alamo Area MPO

Like population, employment and freight traffic, the need for freight planning in the Alamo Area is growing



**Past**

**Ongoing**

**Future**

- 2007: AAMPO purchased Global Insight data and held conversations with economic, manufacturing and trade entities about potential freight data needs
- 2012: AAMPO mapped Intermodal Facilities and Connectors for inclusion in National Highway System
- 2013: AAMPO hosted Freight Stakeholder Workshops



# In November 2013, the MPO held a pair of Freight Stakeholders Workshops



Asked attendees for input on a variety of freight issues:

- Traffic congestion
- Safety concerns
- Rail issues
- Delivery issues
- Physical barriers
- Conflict points



Like population, employment and freight traffic, the need for freight planning in the Alamo Area is growing

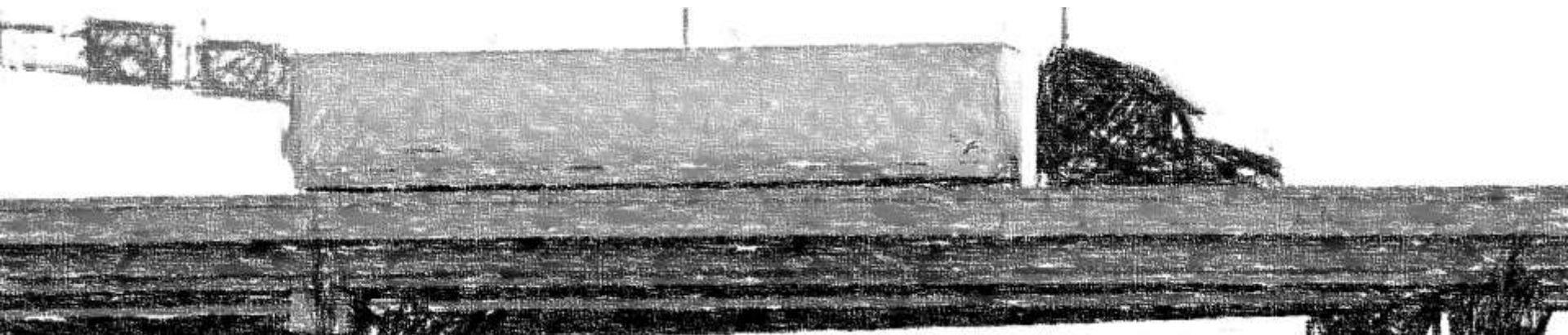


Past

Ongoing

Future

- TAC representation by private transportation providers
- Presentation of freight-related data



# AAMPO has created a web viewer for freight-related data at [maps.alamoareampo.org/freight](https://maps.alamoareampo.org/freight)

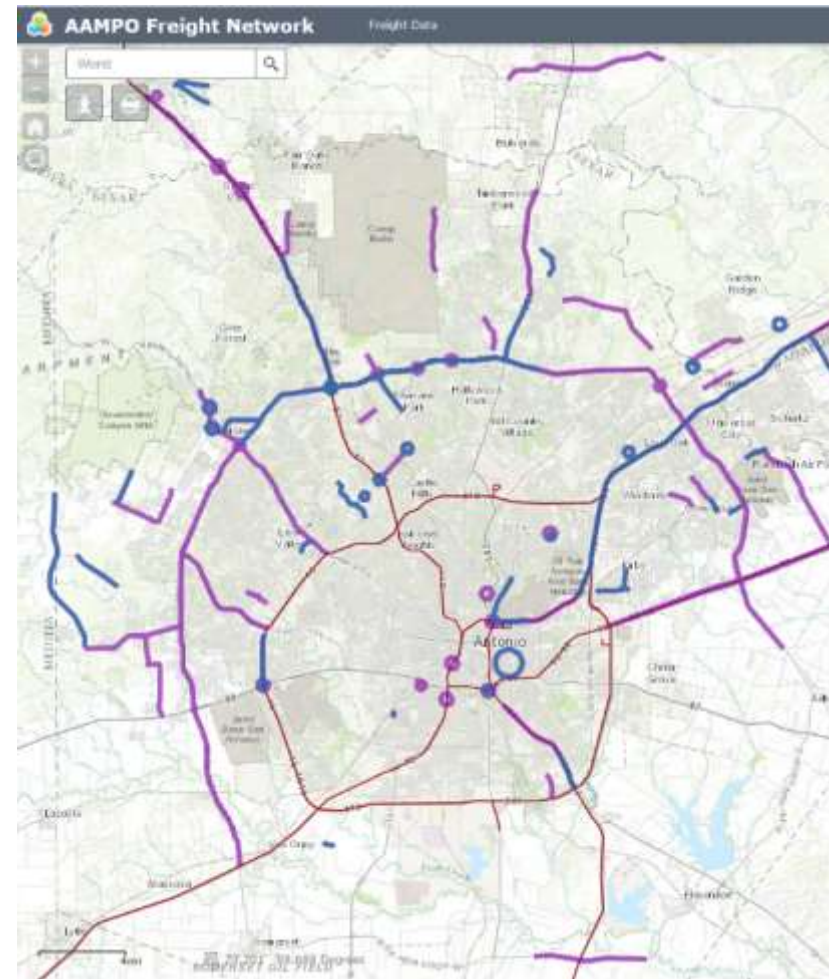


## National Multimodal Freight Network:

- National Highway Freight Network
- Class 1 freight railroads
- Ports
- Inland and intracoastal waterways
- Marine highways
- Airports
- Other assets (i.e. border crossings and rail connectors)

## National Highway Freight Network:

- Primary Highway Freight System
- Other Interstates not identified as part of PHFS
- Critical Rural Freight Corridors (*in progress*)
- Critical Urban Freight Corridors (*in progress*)



Like population, employment and freight traffic, the need for freight planning in the Alamo Area is growing

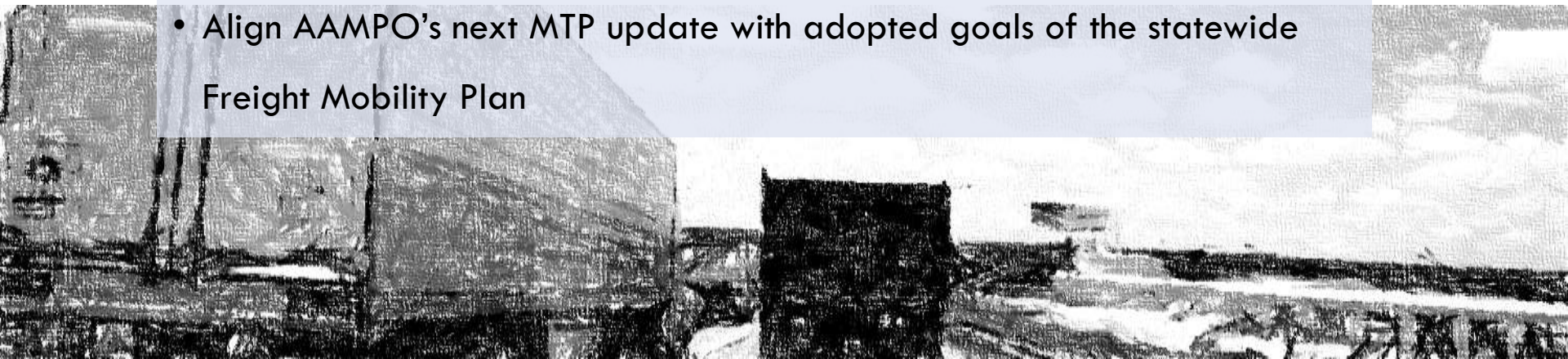


Past

Ongoing

Future

- Formally define and designate a Critical Urban Freight Network (CUFN)
- Convene Freight, Rail and Transit Work Group under TAC
- Align AAMPO's next MTP update with adopted goals of the statewide Freight Mobility Plan



# FAST Act Freight Provisions: AAMPO Public Involvement Process for Critical Urban Freight Network (CUFN) Designation (DRAFT)



**Technical Advisory Committee**



**AAMPO Freight Work Group**



**TAC**



**TPB**

**October 7, 2016**

- Fast Act freight provisions (TxDOT)
- Texas Freight Mobility Plan implementation (TxDOT)
- Status of local freight planning (AAMPO)

**November 16, 2016**

- Developing a Critical Urban Freight Network (AAMPO)
- Results of 2013 Freight Workshops (AAMPO)
- Mapping exercise

**December 2 & 5, 2016**

- Update on Freight Work Group meeting
- Highlights of FAST Act freight provisions and AAMPO process
- Results of Freight Work Group meeting



**AAMPO Freight Workshops**

**January 10, 2017**

9:30 a.m. & 1:30 p.m.  
(Back-to-back workshops similar in content and format)

- Potential topics
- Highlights of FAST Act freight provisions
  - Document feedback on draft CUFN
  - Results of 2013 Freight Workshops
  - Introduce MTP 2045 process
  - TTI Freight Shuttle System information



**AAMPO Freight Work Group**

**February 2017**

- Recommend CUFN based on TAC/TPB/Freight Workshop feedback



**TAC**



**TPB**

**March & April 2017**

- Two-step presentation and action process to recommend CUFN



Thank you!

Allison "Allie" Blazosky, AICP  
AAMPO Regional Transportation Planner  
[blazosky@alamoareampo.org](mailto:blazosky@alamoareampo.org)  
210-230-6911